



Government of India
Ministry of Earth Sciences



India Meteorological Department

PRESS RELEASE-6

Time of issue: 1530 hours IST

Dated: 17 June, 2023

Sub: Deep Depression (Remnant of Cyclonic Storm 'Biparjoy') over Southwest Rajasthan and adjoining Gujarat

Yesterday's cyclonic storm "Biparjoy" pronounced as "BIPORJOY" over Saurashtra & Kutch moved east-northeastwards, weakened into a Deep Depression in the same midnight (2330 hours IST of 16th June, 2023) over Southeast Pakistan and adjoining Southwest Rajasthan and Kutch. At 1130 hours IST of today, the 17th June, 2023, it lay centered over Southwest Rajasthan and adjoining Gujarat near latitude 25.3°N and longitude 71.9°E, about 70 km southeast of Barmer and 160 km southwest of Jodhpur.

It is very likely to move east-northeastwards and weaken into a Depression during next 06 hours. Thereafter, it is very likely to continue to move east-northeastwards and maintain the intensity of Depression till forenoon of 18th June.

Forecast track and intensity are given below:

Date/Time(IST)	Position (Lat. °N/ long. °E)	Maximum sustained surface wind speed (Kmph)	Category of cyclonic disturbance
17.06.23/1130	25.3/71.9	50-60 Gusting To 70	Deep Depression
17.06.23/1730	25.6/72.4	45-55 Gusting To 65	Depression
17.06.23/2330	25.9/73.0	40-50 Gusting To 60	Depression
18.06.23/0530	26.2/73.8	35-45 Gusting To 55	Depression

The graphics based on 0600 UTC of 17th June are placed at Annexure-1. The realised rainfall over Gujarat and Rajasthan is placed at Annexure-2.

Warnings:

(i) Heavy Rainfall warning:

- Light to moderate rainfall at most places with isolated heavy to extremely heavy rainfall is likely over south Rajasthan and isolated heavy to very heavy rainfall over adjoining north Gujarat region & Kutch on 17th June.

(ii) Wind warning:

Wind Warning for South Rajasthan and adjoining north Gujarat

- Squally wind speed reaching 45-55 kmph gusting to 65 kmph till night of 17th June and decrease thereafter becoming 35-45 kmph gusting to 55 kmph by morning of 18th June.

Contact: Cyclone Warning Division, Office of the Director General of Meteorology, India Meteorological Department, Ministry of Earth Sciences.

Phone:(91) 11-24652484, FAX: (91) 11-24643128, 24623220, E-mail:cwdhq2008@gmail.com, Website: rsmcnewdelhi.imd.gov.in

Spatial rainfall distribution: Isolated: <25%, A few: 26-50%, Many: 51-75%, Most: 76-100%

Rainfall amount (mm): Heavy rain: 64.5 – 115.5, Very heavy rain: 115.6 – 204.4, Extremely heavy rain: 204.5 or more.

(iii) Damage expected over Kachchh and North Saurashtra districts during next 06 hours:

- Minor damage to loose / unsecured structures.
- Some breaches in Kutcha road due to flooding.
- Minor damage to Banana trees and near coastal agriculture due to salt spray.
Damage to ripe paddy crops.
- Minor damage to Kutcha embankments.

The system is under continuous surveillance and the next message will be issued at 1430 hours IST of the 18th June, 2023.

For regular updates kindly visit www.rsmcnewdelhi.imd.gov.in and www.mausam.imd.gov.in

Contact: Cyclone Warning Division, Office of the Director General of Meteorology,
India Meteorological Department, Ministry of Earth Sciences.

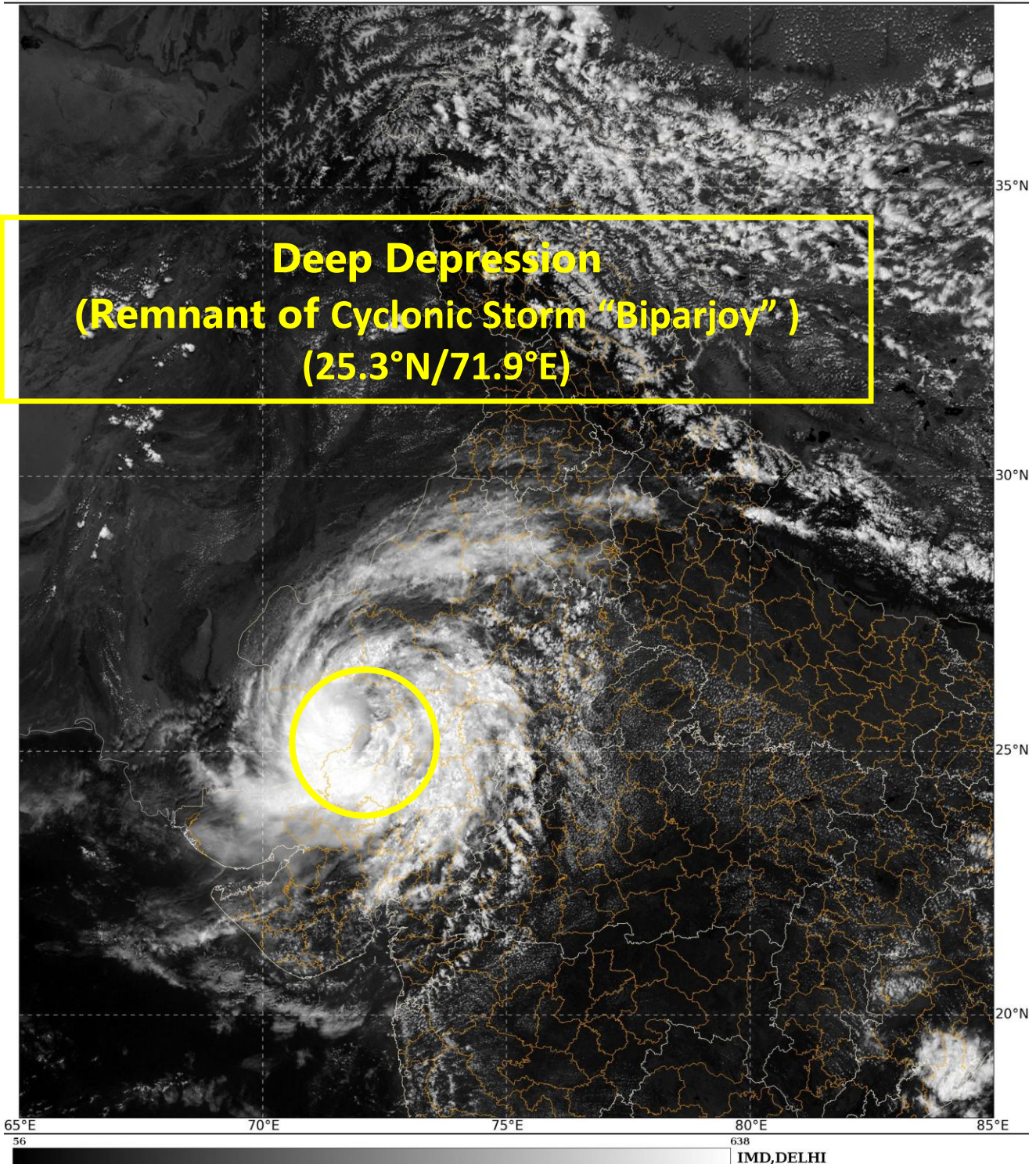
Phone:(91) 11-24652484, FAX: (91) 11-24643128, 24623220, E-mail:cwdhq2008@gmail.com, Website: rsmcnewdelhi.imd.gov.in

Spatial rainfall distribution: Isolated: <25%, A few: 26-50%, Many: 51-75%, Most: 76-100%

Rainfall amount (mm): Heavy rain: 64.5 – 115.5, Very heavy rain: 115.6 – 204.4, Extremely heavy rain: 204.5 or more.

SAT : INSAT-3DR IMG
Visible Count 0.65 um
NWQ

17-06-2023/(0715 to 0742) GMT
17-06-2023/(1245 to 1312) IST



Contact: Cyclone Warning Division, Office of the Director General of Meteorology,
India Meteorological Department, Ministry of Earth Sciences.

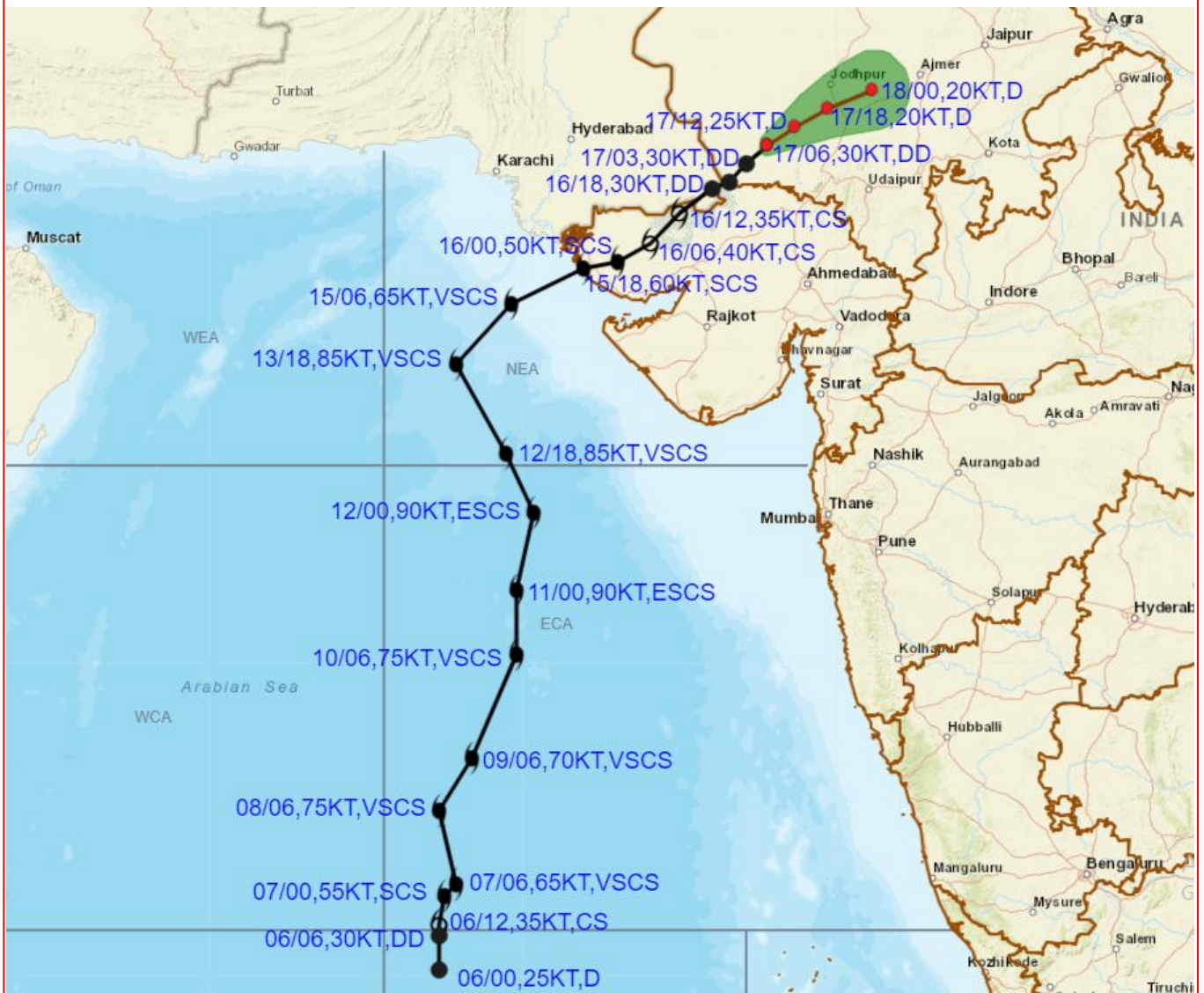
Phone:(91) 11-24652484, FAX: (91) 11-24643128, 24623220, E-mail:cwdhq2008@gmail.com, Website: rsmcnewdelhi.imd.gov.in

Spatial rainfall distribution: Isolated: <25%, A few: 26-50%, Many: 51-75%, Most: 76-100%

Rainfall amount (mm): Heavy rain: 64.5 – 115.5, Very heavy rain: 115.6 – 204.4, Extremely heavy rain: 204.5 or more.



OBSERVED AND FORECAST TRACK ALONGWITH CONE OF UNCERTAINTY OF DEEP DEPRESSION (REMANANT OF CYCLONIC STORM BIPARJOY) OVER SOUTHWEST RAJASTHAN AND ADJOINING GUJARAT BASED ON 0600 UTC (1130 IST) OF 17TH JUNE 2023.

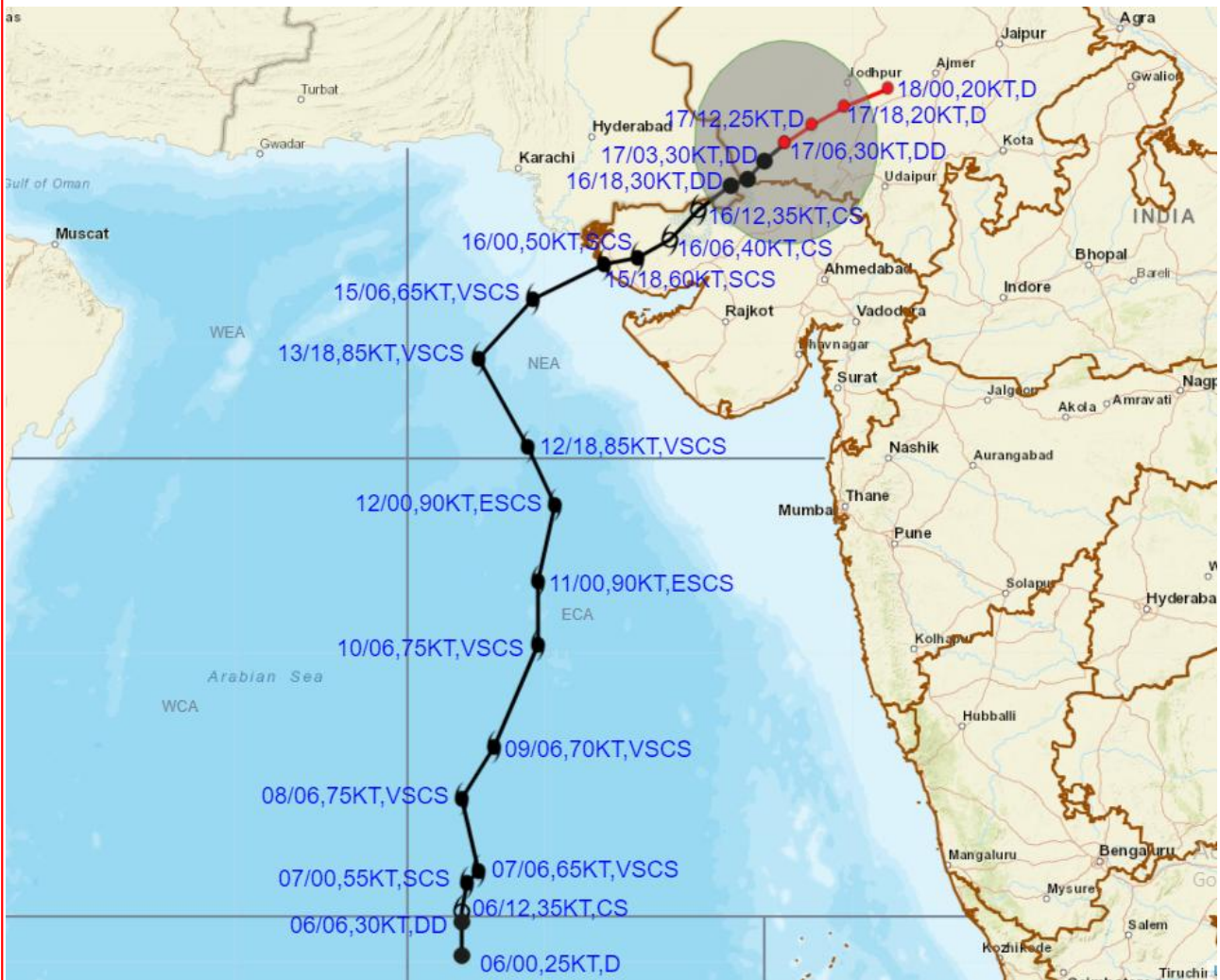


DATE/TIME IN UTC
 IST=UTC + 0530
 L: LOW PRESSURE AREA
 WML: WELL MARKED LOW PRESSURE AREA
 D: DEPRESSION (17-27 KT)
 DD: DEEP DEPRESSION (28-33 KT)
 CS: CYCLONIC STORM (34-47 KT)
 SCS: SEVERE CYCLONIC STORM (48-63KT)
 VSCS: VERY SEVERE CYCLONIC STORM (64-89 KT)
 ESCS: EXTREMELY SEVERE CYCLONIC STORM (90-119 KT)
 SuCS: SUPER CYCLONIC STORM (\geq 120 KT)

- LESS THAN 34 KT
- 34-47 KT
- \geq 48 KT
- OBSERVED TRACK
- FORECAST TRACK
- CONE OF UNCERTAINTY



OBSERVED AND FORECAST TRACK ALONGWITH QUADRANT WIND DISTRIBUTION OF DEEP DEPRESSION (REMANANT OF CYCLONIC STORM BIPARJOY) OVER SOUTHWEST RAJASTHAN AND ADJOINING GUJARAT BASED ON 0600 UTC (1130 IST) OF 17TH JUNE 2023.



DATE/TIME IN UTC

IST=UTC + 0530

L: LOW PRESSURE AREA

WML: WELL MARKED LOW PRESSURE AREA

D: DEPRESSION (17-27 KT)

DD: DEEP DEPRESSION (28-33 KT)

CS: CYCLONIC STORM (34-47 KT)

SCS: SEVERE CYCLONIC STORM (48-63KT)

VSCS: VERY SEVERE CYCLONIC STORM (64-89 KT)

ESCS: EXTREMELY SEVERE CYCLONIC STORM (90-119 KT)

SuCS: SUPER CYCLONIC STORM (≥ 120 KT)

● LESS THAN 34 KT

○ 34-47 KT

● ≥ 48 KT

— OBSERVED TRACK

— FORECAST TRACK

▲ CONE OF UNCERTAINTY

AREA OF MAXIMUM SUSTAINED WIND SPEED:

■ 28-33 KT (52-61 KMPH)

■ 34-49 KT (62-91 KMPH)

■ 50-63 KT (92-117 KMPH)

■ ≥ 64 KT (≥ 118 KMPH)

IMPACT OVER THE SEA

MSW (knot/kmph)	Impact	Action
28-33 (52-61)	Very rough seas	Total suspension of fishing operations
34-49 (62-91)	High to very high seas	Total suspension of fishing operations
50-63 (92-117)	Very high seas	Total suspension of fishing operations
≥ 64 (≥ 118)	Phenomenal	Total suspension of fishing operations

Contact: Cyclone Warning Division, Office of the Director General of Meteorology,

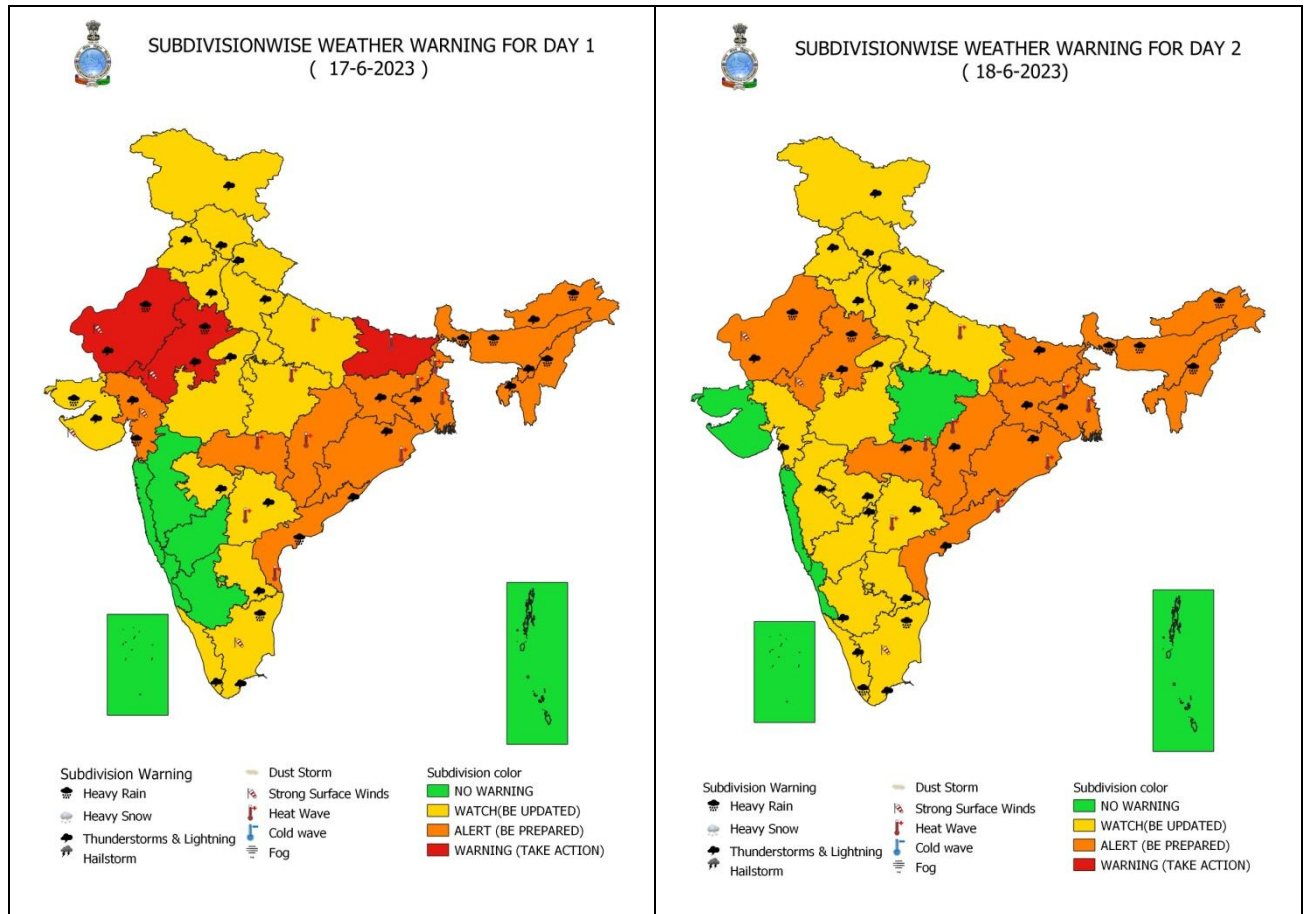
India Meteorological Department, Ministry of Earth Sciences.

Phone:(91) 11-24652484, FAX: (91) 11-24643128, 24623220, E-mail:cwdhq2008@gmail.com, Website: smcnewdelhi.imd.gov.in

Spatial rainfall distribution: Isolated: <25%, A few: 26-50%, Many: 51-75%, Most: 76-100%

Rainfall amount (mm): Heavy rain: 64.5 – 115.5, Very heavy rain: 115.6 – 204.4, Extremely heavy rain: 204.5 or more.

All India Heavy Rainfall Warning for 17th to 18th June 2023



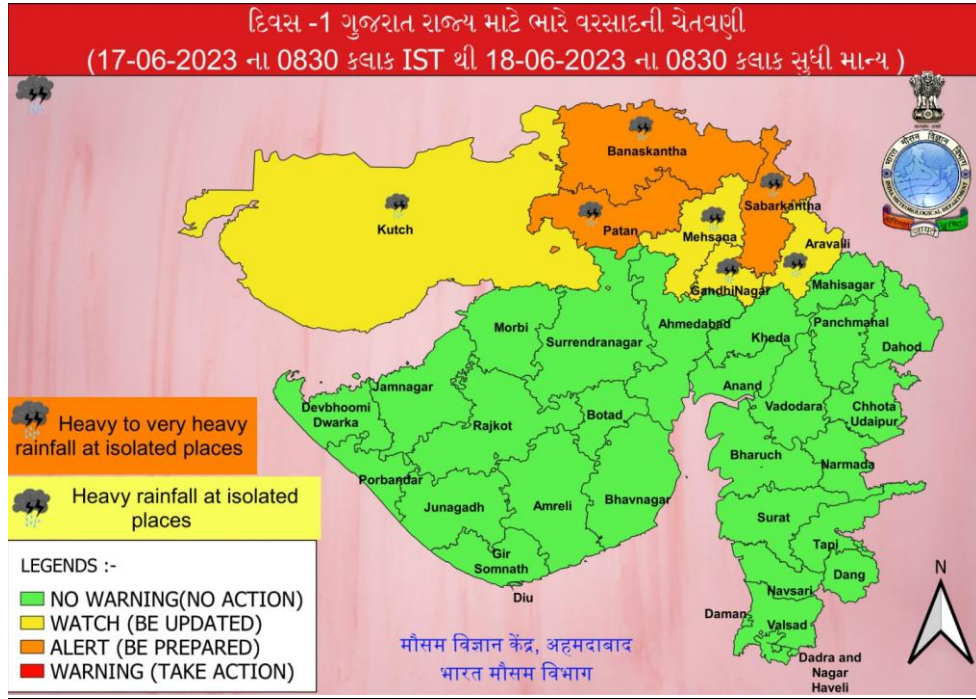
**Contact: Cyclone Warning Division, Office of the Director General of Meteorology,
India Meteorological Department, Ministry of Earth Sciences.**

Phone:(91) 11-24652484, FAX: (91) 11-24643128, 24623220, E-mail:cwdhq2008@gmail.com, Website: rsmcnewdelhi.ind.gov.in

Spatial rainfall distribution: Isolated: <25%, A few: 26-50%, Many: 51-75%, Most: 76-100%

Rainfall amount (mm): Heavy rain: 64.5 – 115.5, Very heavy rain: 115.6 – 204.4, Extremely heavy rain: 204.5 or more.

District-wise Heavy Rainfall Warning Maps for 17th June



Contact: Cyclone Warning Division, Office of the Director General of Meteorology,
India Meteorological Department, Ministry of Earth Sciences.

Phone:(91) 11-24652484, FAX: (91) 11-24643128, 24623220, E-mail:cwdhq2008@gmail.com, Website: rsmcnewdelhi.ind.gov.in

Spatial rainfall distribution: Isolated: <25%, A few: 26-50%, Many: 51-75%, Most: 76-100%

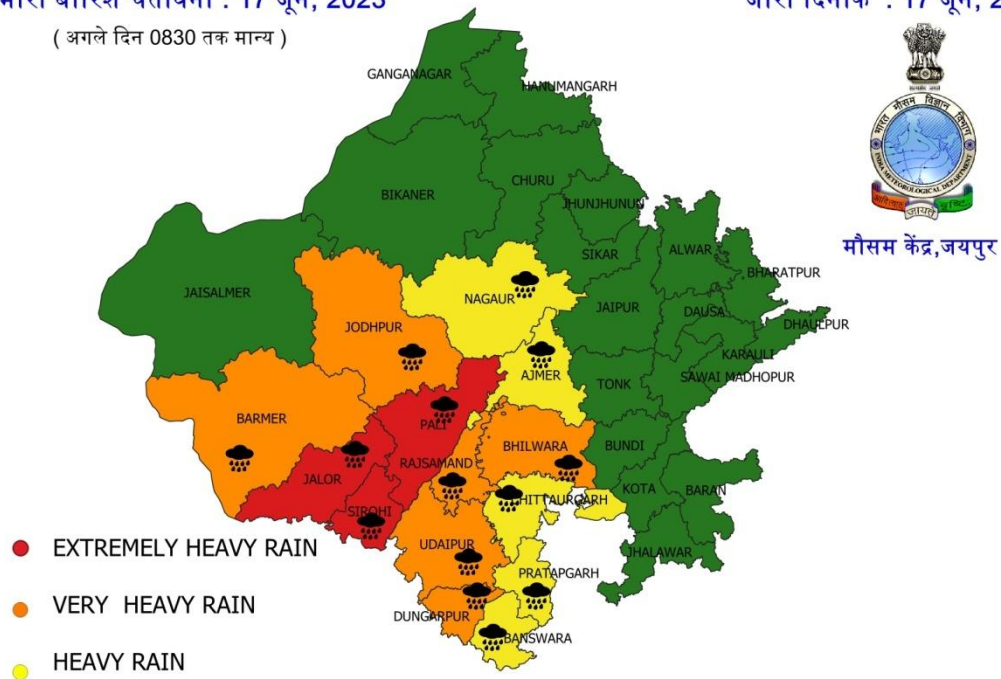
Rainfall amount (mm): Heavy rain: 64.5 – 115.5, Very heavy rain: 115.6 – 204.4, Extremely heavy rain: 204.5 or more.

District-wise Heavy Rainfall Warning Maps for 17th to 18th June for Rajasthan

भारी बारिश चेतावनी : 17 जून, 2023

(अगले दिन 0830 तक मान्य)

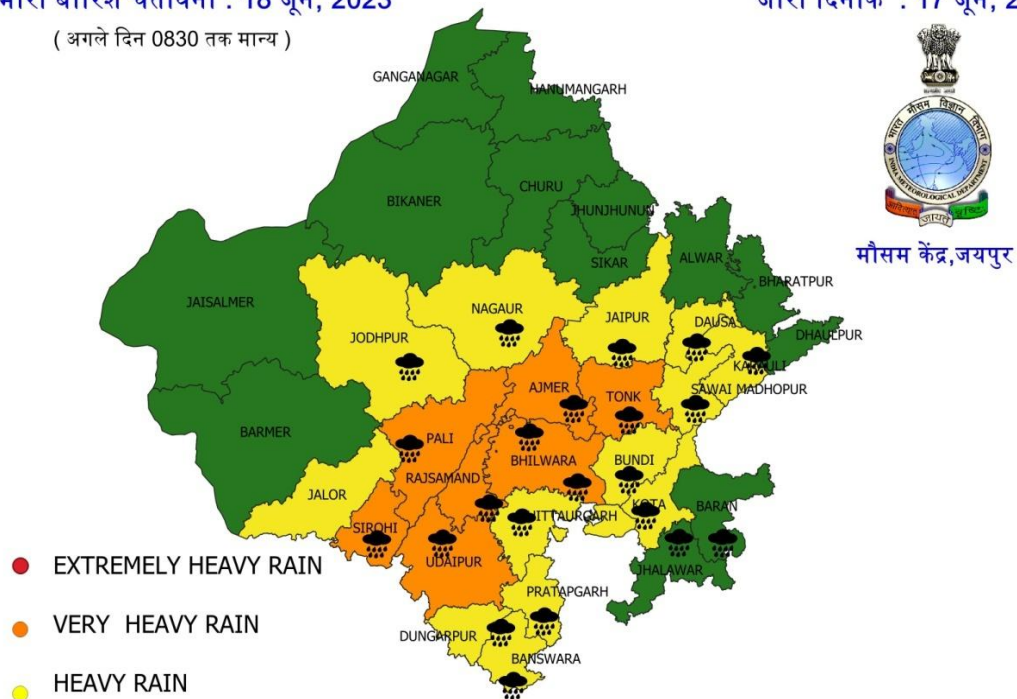
जारी दिनांक : 17 जून, 2023



भारी बारिश चेतावनी : 18 जून, 2023

(अगले दिन 0830 तक मान्य)

जारी दिनांक : 17 जून, 2023



Contact: Cyclone Warning Division, Office of the Director General of Meteorology,
India Meteorological Department, Ministry of Earth Sciences.

Phone:(91) 11-24652484, FAX: (91) 11-24643128, 24623220, E-mail:cwdhq2008@gmail.com, Website: rsmcnewdelhi.ind.gov.in

Spatial rainfall distribution: Isolated: <25%, A few: 26-50%, Many: 51-75%, Most: 76-100%

Rainfall amount (mm): Heavy rain: 64.5 – 115.5, Very heavy rain: 115.6 – 204.4, Extremely heavy rain: 204.5 or more.

24 hours cumulative heavy rainfall (≥ 7 cm) in cm ending at 0830 hours IST of date:

16th June:

Gujarat region

Wav (dist Banaskantha)-8

Saurashtra & Kutch

Gandhidham (dist Kutch)-20, Kandla Airport (dist Kutch)-16, Dwarka (dist Devbhoomi Dwarka)-15, Anjar (dist Kutch), Bhuj (dist Kutch) & Mundra (dist Kutch)-13 each, Okha (dist Devbhoomi Dwarka)-11, Kandla New (dist Kutch) & Khambhalia (dist Devbhoomi Dwarka)-10 each, Jamjodhpur (dist Jamnagar)-9, Kalyanpur (dist Devbhoomi Dwarka)-8, Jamnagar (dist Jamnagar), Naliya (dist Kutch) & Kalavad (dist Jamnagar)-7 each.

17th June:

Gujarat: Okha (dist Devbhoomi Dwarka)-23, Anjar (dist Kutch)-22, Mandvi(k) (dist Kutch)- 22, Bhachau (dist Kutch)-21, Mundra (dist Kutch)-19, Rapar (dist Kutch)-19, Nakhatrana (dist Kutch)-17, Kandla New (dist Kutch)-17, Jamnagar (dist Jamnagar)-16, Gandhidham (dist Kutch)-15, Khambhalia (dist Devbhoomi Dwarka)-13, Bhuj (dist Kutch)-13, Kandla Airport (dist Kutch)-12, Lodhika (dist Rajkot)-11, Lakhpat (dist Kutch)-10, Kalavad (dist Jamnagar)-10, Chuda (dist Surendranagar)-10, Wankaner (dist Morbi)-9, Jodia (dist Jamnagar)-9, Rajkot (dist Rajkot)-9, Tankara (dist Morbi)-8, Morbi (dist Morbi)-8, Dhrol (dist Jamnagar)-7, Abdasa (dist Kutch)-7, Targhadia (dist Rajkot)-7, Chotila (dist Surendranagar)-7, Halvad (dist Morbi)-7, Jamnagar (dist Jamnagar)- 7.

Rajasthan: Mt. Abu (Sirohi)- 21, Sedwa (Barmer) 14, Mounntabu Tehsil (Sirohi) 13, Raniwada (Jalore) 11, Bidasra (Churu) 8 and Reodar (Sirohi) 7cm

(dist: District)